



AttachmentsCJJ.Com



Fax: 218-847-9416
218-847-2608
800-445-8244
<http://www.attachmentscjj.com>
sales@attachmentscjj.com

Specifications



Four
Sizes

Overall width: 62", 68", 75", 82"
Overall depth: 45.5"
Overall height: 21.5"
Inside depth: 38"
Approx. weight: 530 lbs., 570 lbs.,
610 lbs., 660 lbs.
Tine spacing: 3"
Tine width: .375"

The 3" finger tines allow the dirt/sand and gravel to fall away while larger objects collect in the skeleton rock bucket. The collected objects ride in a curved shaped pocket which help to keep them from rolling out freely. Great for sifting, sorting and screening differently sized materials of many types.

Rock bucket



Rock bucket heavy duty

Overall width: 62", 68", 75", 82"
Overall depth: 45.5"
Overall height: 21.5"
Inside depth: 38"
Approx. weight: 530 lbs., 570 lbs.,
610 lbs., 660 lbs.
Tine spacing: 6"
Tine width: .5"

Shown here with tractor hook-up, also available with universal style skid steer mounting plate.

Large rocks ride in a curved shaped pocket, that helps them from rolling out freely. Tines are thicker than our other rock buckets and have 6" spacing.

1-800-445-8244



Snow/Light material bucket

Overall width: 66", 72", 78", 84"
90", 96", 102", 108"
Overall depth: 46"
Overall height: 34"
Inside width: 63", 69", 75", 81",
87", 93", 99", 105"
Inside depth: 40"
Cutting edge: .5" X 6" C1055

Take on a variety of snow conditions. Also may be used to move material such as sawdust, sunflower hulls and other light material products. Optional reversible double bevel bolt-on cutting edge is available.



Tough tooth bucket

Overall width: 60", 66", 72", 78",
84", 96"
Overall depth: 39.5" less teeth
Overall height: 22"
Inside width: 58", 64", 70", 76",
82", 94"
Inside depth: 36" less teeth
Cutting edge: .5" X 6" C1055
Steel skid plates: .375" thick
Tooth spacing: 6", 12"

Heavy duty low profile design. Has welded on adapters with pin-on teeth. Built tough. Great for use on a construction, farm, ranch or landscaping job site.



Shown with optional bolt-on edge.

Utility bucket

Overall width: 66", 72", 78", 84"
Overall height: 26"
Inside depth: 40"
Cutting edge: .5" X 6" C1055

A practical use bucket, capable of substituting for other buckets. The utility bucket's 26" height sits somewhere between the dirt bucket's 22" & light material bucket's 41.5" overall height. Shown with optional bolt-on replacement cutting edge.



Dirt bucket

Overall width: 60", 66", 72" 78",
84", 96"
Overall depth: 39.5"
Overall height: 22"
Inside width: 58", 64", 70", 76",
82", 94"
Inside depth: 36"
Cutting edge: .5" X 6" C1055

Designed with 5/16" steel, underside located, skid plates for greater reinforcement and long lasting durability. Replacement blade cutting edges are available per customer specifications.



Two-way side flow bucket

	Heavy material	Light material
Inside width:	72"	84"
Overall width:	82"	92"
Weight:	885 lbs.	1089 lbs.
Depth:	38.5"	42.5"
Height:	29.5"	51.5"
Cap. cu. yds.	1	2.33
Orbit motors:	2	3
Cutting edge:	.5" X 4"	.5" X 4"

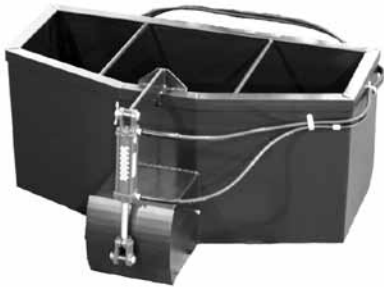
Light or heavy material bucket with dual side discharge. The operator rotates and lowers the attachment so as to become a bucket able to scoop material up, then rotates and raises to become a hopper with a multiple directional conveyor. The light material bucket has beater bar to help prevent material bridging.



High dump bucket

Overall width:	60", 72", 84"
Overall depth:	55.75"
Overall height:	3'
Inside width:	58.75", 70.75", 82.75"
Inside depth:	44"
Cutting edge:	.5" X 6" C1055

Why buy a new skid loader when all you need is a high dump bucket to get the job done. Possible uses include loading high sided vehicles such as potato trucks. Increase the dumping height of your current skid steer loader.



Concrete bucket

Width:	54"
Depth:	34"
Height:	24"
Approx. weight:	370 lbs., 390 lbs.
Shell:	10 gauge steel
Discharge chute size:	12" X 12"
Capacity:	.5 yard

Great for the times you can't get a truck in the position you want or a concrete pumper is overkill. There are two models to choose from; a manually operated or hydraulically operated discharge gate model. The hydraulic model's discharge gate helps the operator to control the concrete flow more precisely for more accuracy.



Brush bucket

Width:	62", 68", 75", 82"
Height overall:	36"
Depth inside:	38"
Open tine to tine height:	50"
Approx. weight:	787 lbs., 833 lbs., 879 lbs., 915 lbs.
Tine spacing:	3"

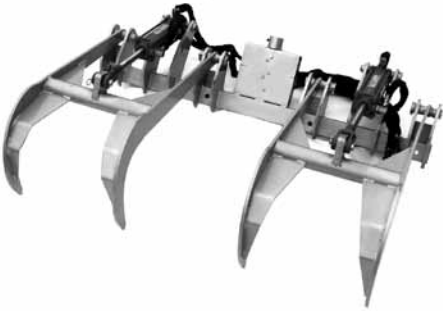
The brush bucket is a combination of a grapple and finger tine bucket. The grapple is welded in place for added strength and durability. The open side wall design on this brush bucket makes carrying longer than bucket-width items easier. Available with optional bolt-on sides.



Brush bucket low weight

Width: 68"
Height overall: 32 "
Depth inside: 28"
Approx. weight: 420 lbs.
Tine spacing: 6"
Open tine to tine height: 50"
Open side wall design

This bush buck weighs less than our heavy duty bush bucket, making it a great choice for smaller skid steers.



Grapple

Width: 50", 60"
Steel tines construction: A36 steel
Mounting: weld-on
Approx. weight: 320 lbs.

Use this grapple with a variety of buckets. Weld in place. The rams used are of standard design, making any future repair or replacement simple. Flow controls help to control grapple speed.



4 in 1 bucket

Overall width: 66", 72" or 84"
Overall depth: 38.5"
Overall height: 29"
Inside width:
64.75", 70.75" or 82.75"
Inside depth: 31"
Approx. weight: 66" - 677 lbs.
Cutting edge: .5" X 6" C1055
Bucket side: .25" - A36 steel

Four in one skid steer attachments have many uses as a clamshell bucket, dozer, bottom dump, or as a regular style bucket. Use in a variety of ways.



Hopper bucket

Width overall: 84"
Height overall: 39"
Length overall: 85"
Approx. weight: 1100 lbs.
Capacity heaped: 89 Cu. Ft.
Capacity leveled: 68 Cu. Ft.

Want to carry and dump more without buying a larger skid steer/loader. Take a look at the hopper bucket. The hopper bucket has it's own set of wheels to help carry the additional weight that this bucket holds.



Round hay bale spear

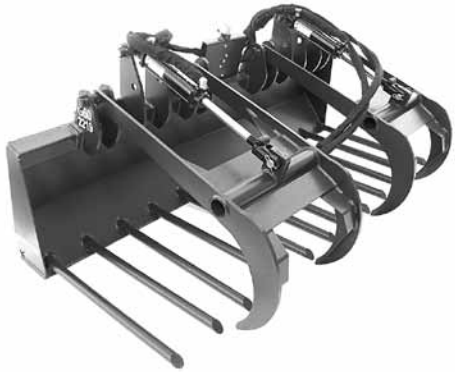
Height: 19", Width: 46"
Tine overall length: 23.6" & 49.2"
Tine usable length: 19" & 45"
Tine max. dia.: 1.4375"

Square hay bale spear

Height: 19", Width: 46"
Tine overall length: 32.3" & 48.8"
Tine usable length: 28" & 45"
Tine max dia.: 1.75"

Handle round or square hay bales. Multiple 2, 3 or 4 tine configurations are available. Choose between small or large tine lengths and diameters to meet your needs. Spears/tines bolt in place for ease of shipping and for quicker replacement if ever needed. The imported tines are a product of Kverneland.

Round/Square bale spear



Overall width:
55", 60", 66", 72", 78"
Overall depth: 34"
Overall height: 32.5"
Inside depth: 30"
Usable tine length: 26.75"
Number of replaceable tines:
8, 9, 10, 11 or 12
Approx. weights:
560 lbs., 600 lbs., 640 lbs., 680 lbs., 720 lbs.

Large round tine design makes for easy after use wash-down. Use for manure and hay/straw clean-up. Plus this manure fork can also be used for light brush clearing. Five manure fork sizes to pick from ranging from 55" to 78" overall width. Choose from 8 to 12 tine models.

Manure forks

Grapple shown is optional.



Approx. Weight: 1015 lbs.
(including optional grapple)
Overall width: 74"
Overall depth: 34"
Overall height: 36.5"
Usable tine length: 26.75"

Use for manure and hay/straw clean-up. Heavy Duty.

Bolted in place large round tine design.

Grapple shown is optional.

Manure forks heavy



Fork length: 48"
Fork width: 4"
Height overall: 38.5"
Width overall: 55"
Width less steps: 45.5"
Est. lift capacity: 3950 lbs. at 24"
ITA Class II
(Other classes available)
Approx. Weight: 414 lbs.



Ask about the step thru model.

Great for unloading trucks on the job site. Features handy side steps. Imported forks. Heavy duty model also available.

Forks & frame



Height: 60"
 Width: 72"
 Depth: 72"
 Shipping weight: 475 lbs.
 Made from:
 1.5" X 2.5" corner
 1" X 1" square steel tube
 8" spacing between tubes
 Welded panels bolt together

Calf corral/carrier

The calf catching corral attachment rounds up newborn calves, separating calf from cow. Simply raise the corral attachment over the calf and then lower the corral so as to catch the calf inside the corral. Enter the corral, place calf on the platform to transport.



Call with inside bucket width.



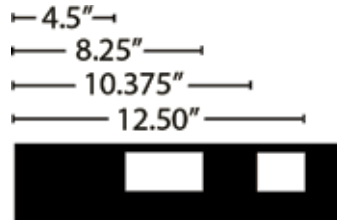
Tooth spacing: 6" on center
 Cutting edge size: 4" by .5"
 Cutting edge: C1055

Give your old bucket a new bite with this sharp, solid tooth bar. Heavy duty tooth design with pre-drilled holes allowing bolting to your old bucket sides. Teeth are built to pin on to the bar. They can be removed from the bar to re-sharpen or replace, which will increase your bucket's life.

Tooth bar



Height inside: 16"
 Width overall: 45"
 Width inside: 44.5"



This attachment plate comes ready to mount, spaced and squared to work with many skid steer models. (Check your skid-steer manufacturer specifications before ordering) Remove old hook-up from bucket and weld universal plate in it's place.

Universal plate



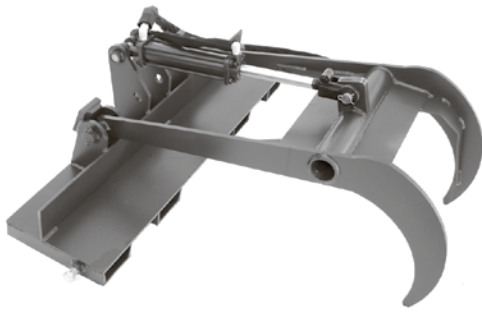
Are you in need of a bucket, and have your own design specifications/needs in mind? Custom-build an attachment for your loader, backhoe, crawler, tractor, telehandler, skid steer or compact equipment. Let us quote the attachment you need.

Custom made bucket

Testimonial

“. . . the bucket fits fine on the tractor and it works fine. A job well done by you and your company. . . .”

George Kirick, Hazen, ND



Overall height: 15"
 Width: 45"
 Length: 40"
 Tine spacing: 17.5"
 Open tine height: 40"
 Tine construction: 1/2" A36 steel
 Approx. weight: 250 lbs.
 Required for use: pallet forks

Pallet fork grapple

If you already have pallet forks add this attachment.

Combine your skid steer's pallet forks with a grapple.

Skid steer or forklift use.
 Clamp down on loads to help stabilize them.



Overall width: 20"
 Overall height: 20"
 Required for use: pallet forks
 Approx. shipping weight: 55 lbs.
 Material: 3/8" steel.

Pallet fork spade

A spade for your pallet forks?
 This spade works in conjunction with your skid steer and your pallet forks attachment.

The unit is light enough to ship via UPS (55 lbs) but sized right for many digging jobs.

Chain, clevis and hooks shown sold separately.



Overall width: 72", 90", 108", 120"
 Overall height: 25"
 Overall length: 41"
 Approximate weights: 530 lbs., 560 lbs., 590 lbs., 610 lbs.
 Blade degrees of pivot +/-: 30

Snow plow

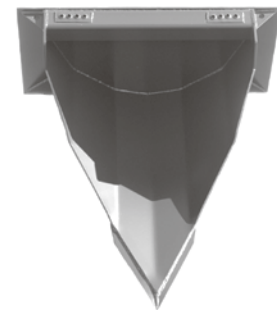
Plow winter out of your way.

This plow has two hydraulic rams to aid the blade's center pivoting action, adjustable spring tensioners, a replaceable bolt on cutting wear edge, plus dual adjustable height skid pads.



Height: 23"
 Length: 49.5"
 Overall width: 45"
 Spade width: 36"
 Weight: 345 lbs.

Tree spade



Relocate small trees. Shovel like single blade design.



Specifications are subject to change without notice.
All brands and names are the property of their respective owners.
Photos are not to scale.
Made in the U.S.A.

Fax: 218-847-9416
218-847-2608
800-445-8244
<http://www.attachmentscjj.com>
sales@attachmentscjj.com



Bolt-on edge

Double bevel edge
Pre-drilled 6" on center holes
Width: 6"
Thickness: .75"
Material: 1080 DBF

Extend your buckets life, with a optional replaceable bolt-on cutting edge. The double bevel edge allows you to flip the blade around to reveal new edge. Lengths available for snow, dirt, utility, high dump and 4 in 1 buckets, (60", 66", 72", 78", 84", 90", 96", 102", 108") Includes mounting hardware.



Hitch receiver clamp-on

Height: 15"
Width: 6"
Length: 23"
Approx. weight: 25 lbs.
Receptacle (receiver tube): 2"

Move trailers with ease around your yard. Drive up to trailers and position hitch in plain sight. Ball mount and pin purchased separately.



Receiver wire unroller

Approx. weight: 27 lbs.
Designed for use with 2" tube mount receivers.

Wire unroller uses your hitch receiver for mounting. Fits 2" tube style hitches. For use with tube style hitches on vehicles such as ATVs, pickups and tractors. Optional adapter is available for 1.25" sized hitches.

Visit: AttachmentsCJJ.Com

1-800-445-8244